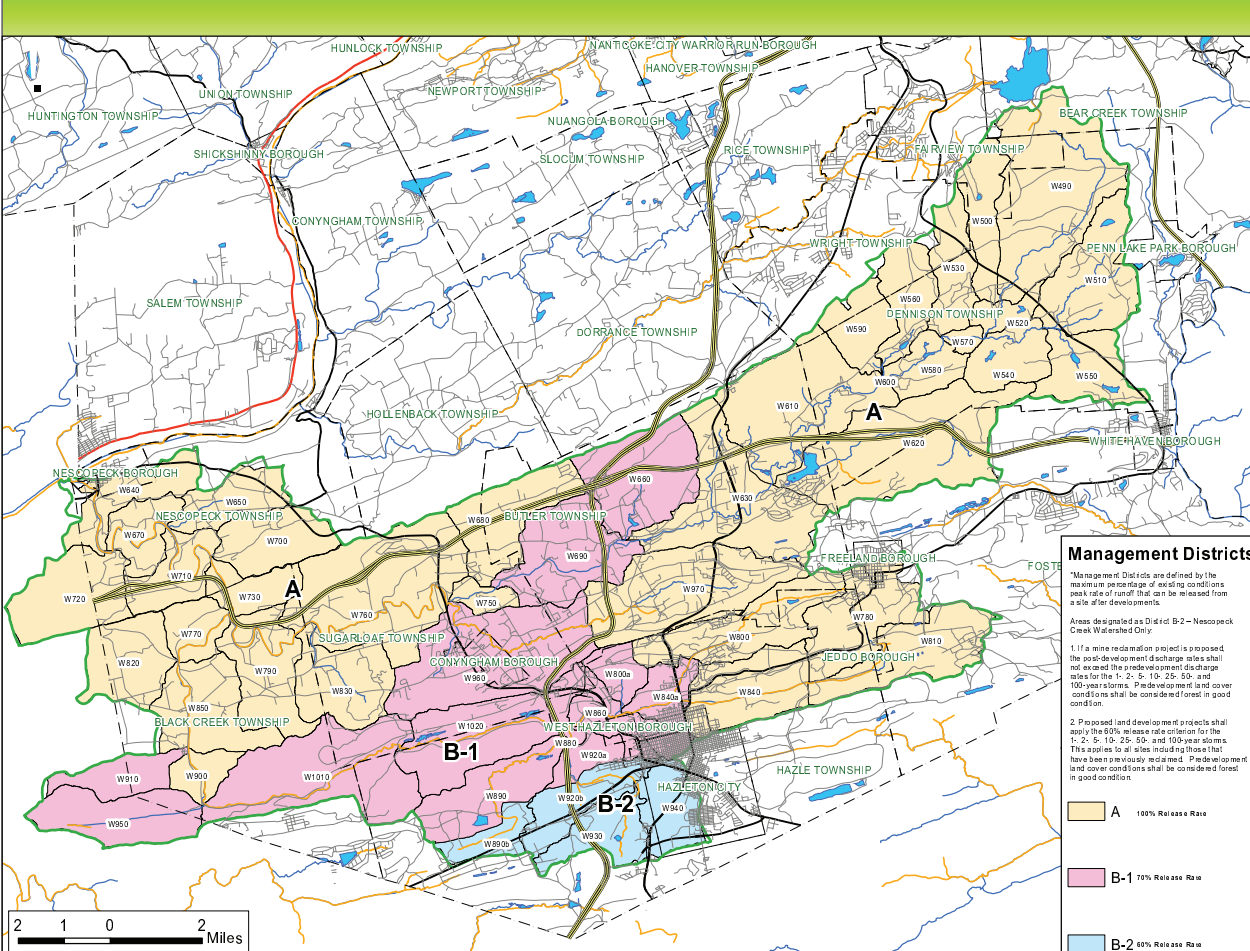


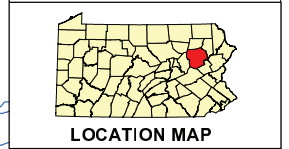
**LUZERNE COUNTY ACT 167
STORMWATER MANAGEMENT PLAN
PHASE II STUDY**

**NESCOPECK CREEK WATERSHED
MANAGEMENT DISTRICTS MAP**




Legend

Watershed Boundary	Roads
Sub Areas	Interstates
Municipal Boundaries	U.S. Highways
Water Bodies	PA State Routes
Impaired Streams	Other Roads
Streams	Local Roads



Prepared For:
Luzerne County
200 North River Street
Wilkes-Barre, PA 18711



Management Districts

Management Districts are defined by the maximum percentage of existing conditions peak rate of runoff that can be released from a site after development.

Areas designated as District B-2 - Nescopeck Creek Watershed Only:

- If a mine reclamation project is proposed the post-development discharge rates shall not exceed the predevelopment discharge rates for the 1-, 2-, 5-, 10-, 25-, 50-, and 100-year storms. Predevelopment land cover conditions shall be considered forest in good condition.
- Proposed land development projects shall apply the 80% release rate criterion for the 1-, 2-, 5-, 10-, 25-, 50-, and 100-year storms. This applies to all sites including those that have been previously developed. Predevelopment land cover conditions shall be considered forest in good condition.

A	100% Release Rate
B-1	70% Release Rate
B-2	60% Release Rate



NOTES:
Portions of this map were generated from the existing data sources noted below. Certain elements of the base map such as municipal boundaries, rail road locations, stream alignments and road networks are provided primarily for reference purposes only and were not directly used for hydrologic computations. In the development of the mapping Borken-Lawson has noted some inconsistencies in the data used for the map. Where obvious inconsistencies in the geographic data were observed the data was adjusted, as needed, to prepare a reasonably accurate map. Although the geographic data was adjusted to compensate for these inconsistencies it is not part of the work plan for this project to correct mapping inaccuracies. Therefore, some geographic inconsistencies may remain on the map.

DATA SOURCES:
Roads - PennDOT
Counties - PennDOT
Municipalities - PennDOT
Streams - PA DEP
Water Bodies - USEWS (Derived from NWI Wetlands)

Northwest Pennsylvania
613 Baltimore Drive
Wilkes-Barre, PA 18702
Tel: 570-821-1999

Lehigh Valley
3893 Adler Place
Bathlehem, PA 18017
Tel: 484-821-0470



PREPARED BY: SAV DATE: 3/18/2010
CHECKED BY: SDB PROJECT NO.: 2008-2426-00